



Install Guide

503102/505608

Microscope Post Stand

CONTENTS

ABOUT THIS MANUAL	1
INTRODUCTION	1
PARTS LIST	1
ASSEMBLY INSTRUCTIONS.....	3
Setting Up the Post Stand.....	3
SPECIFICATIONS.....	5
WARRANTY	7
Claims and Returns	7
Repairs.....	7

Copyright © 2024 by World Precision Instruments. All rights reserved. No part of this publication may be reproduced or translated into any language, in any form, without prior written permission of World Precision Instruments, Inc.

ABOUT THIS MANUAL

The following symbols are used in this guide:



This symbol indicates a CAUTION. Cautions warn against actions that can cause damage to equipment. Please read these carefully.



This symbol indicates a WARNING. Warnings alert you to actions that can cause personal injury or pose a physical threat. Please read these carefully.

NOTES and TIPS contain helpful information.



Fig. 1—The 503102 Post Stand is shown with the 54947 focus mount.

INTRODUCTION

This manual shows how to setup the standard rectangular post stand (**503102**), which can be used with the **PZMIII** and **PZMIV** microscope heads. It comes with the **504947** 76mm focus mount. The setup of the **505608** rectangular post stand is identical. The difference between the two stands is the focus mount. The **505608** uses the **505609** focus mount that is designed for use with the Enhanced Reality Macroscope.

PARTS LIST

After unpacking, verify that there is no visible damage to the unit. Verify that all items are included:

- (1) Base
- (1) Vertical Post
- (1) Vertical Post Extension

- (1) Guard Ring Support
- (1) Reversible Plate
- (1) Clutch Handle
- (1) Post Cap
- (1) Focus Mount
 - 504947 Focus Mount included with the 503102 stand, or
 - 505609 Focus Mount included with the 505608 stand

Download the manual at www.wpiinc.com/manuals.

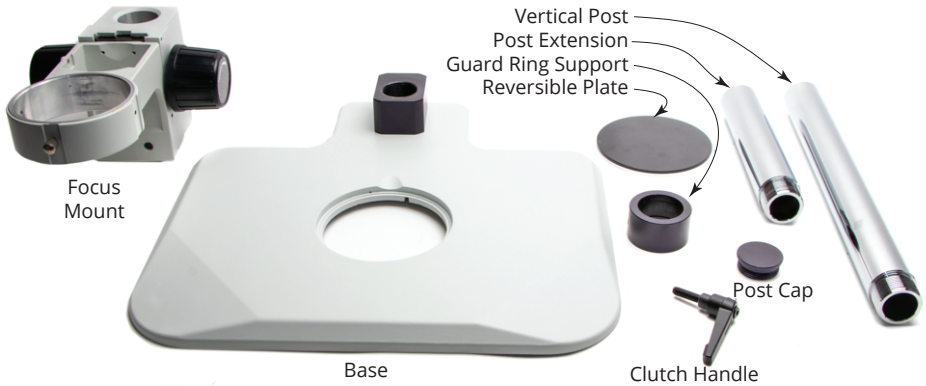


Fig. 2—The pieces for the 503102 post stand are shown here. The 505608 post stand includes the 505609 focus mount for the Enhanced Reality Microscope in place of the 504947 focus mount that is shown here.

Unpacking

Upon receipt of this instrument, make a thorough inspection of the contents and check for possible damage. Missing cartons or obvious damage to cartons should be noted on the delivery receipt before signing. Concealed damage should be reported at once to the carrier and an inspection requested. Please read the section entitled “Claims and Returns” on page 7 of this manual. Please contact WPI Customer Service if any parts are missing at (941) 371-1003 or customerservice@wpiinc.com.

Returns: Do not return any goods to WPI without obtaining prior approval (RMA # required) and instructions from WPI’s Returns Department. Goods returned (unauthorized) by collect freight may be refused. If a return shipment is necessary, use the original container, if possible. If the original container is not available, use a suitable substitute that is rigid and of adequate size. Wrap the instrument in paper or plastic surrounded with at least 100mm (four inches) of shock absorbing material. For further details, please read the section entitled “Claims and Returns” on page 7 of this manual.

ASSEMBLY INSTRUCTIONS

Setting Up the Post Stand

1. Set the base flat on a solid table or work surface. Screw the threaded end of the vertical post into the black support block on the base (Fig. 3). Use a hex key to tighten the screw in the side of the black support block to secure the vertical post (Fig. 4).

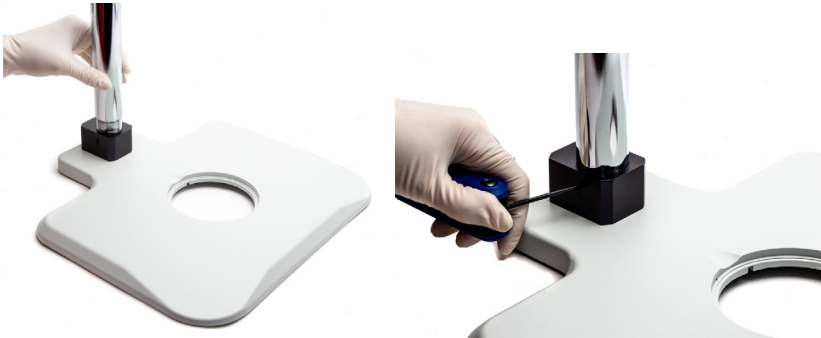


Fig. 3—(Left) Set the base upright and screw the vertical post in place.

Fig. 4—(Right) Tighten the hex screw to secure the vertical post.

2. Screw the post extension into the top of the vertical post.



Fig. 5—Screw the post extension on the top of the vertical post.

3. Screw the clutch handle into the hole in the side of the guard ring support (Fig. 6). Then, slide the guard ring support onto the vertical post. Tighten the clutch handle to secure the guard ring support (Fig. 7).



Fig. 6—(Left) Screw the clutch handle into the threaded hole in the side of the guard ring. Fig. 7—(Right) Slide the guard ring over the top of the vertical post.

4. Slide the focus mount (either the 504947 or the 505608) over the vertical post and gently place it against the guard ring support.

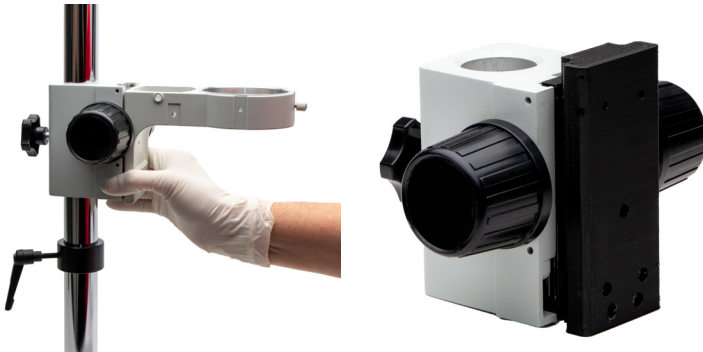


Fig. 8—(Left) Slide the focus mount into place. Fig. 9—(Right) The 505609 slides over the post the same way the 504947 focus mount does. It is used with the 505608 Post Stand for the Enhanced Reality Macrocope.

5. Then, screw the post top cap back into the top of the post (Fig. 10).



Fig. 10—Screw the vertical post top cap into place.

6. Slide the reversible plate into place in the circular cutout of the base. Position the front edge first, and press it into place near the finger indentation at the rear center of the circular cutout. You may position it with the white side up or the black side up. The plate is reversible.



Fig. 11—Position the front edge of the reversible plate first and then snap the back edge into place.

SPECIFICATIONS

Post Stand Diameter.....	32 mm (1.26")
Height of Main Post.....	305 mm (12.01")
Height of Post Extension	150 mm (5.9")
Maximum Height of Post Stand	455 mm (17.91")
Focusing Working Distance.....	50 mm
Distance from Post to Front of Base	273 mm (10.75")
Base Dimensions.....	320 x 305 x 16 mm (12.6 x 12.01 x 0.63")



WARRANTY

WPI (World Precision Instruments) warrants to the original purchaser that this equipment, including its components and parts, shall be free from defects in material and workmanship for a period of one year* from the date of receipt. WPI's obligation under this warranty shall be limited to repair or replacement, at WPI's option, of the equipment or defective components or parts upon receipt thereof f.o.b. WPI, Sarasota, Florida U.S.A. Return of a repaired instrument shall be f.o.b. Sarasota.

The above warranty is contingent upon normal usage and does not cover products which have been modified without WPI's approval or which have been subjected to unusual physical or electrical stress or on which the original identification marks have been removed or altered. The above warranty will not apply if adjustment, repair or parts replacement is required because of accident, neglect, misuse, failure of electric power, air conditioning, humidity control, or causes other than normal and ordinary usage.

To the extent that any of its equipment is furnished by a manufacturer other than WPI, the foregoing warranty shall be applicable only to the extent of the warranty furnished by such other manufacturer. This warranty will not apply to appearance terms, such as knobs, handles, dials or the like.

WPI makes no warranty of any kind, express or implied or statutory, including without limitation any warranties of merchantability and/or fitness for a particular purpose. WPI shall not be liable for any damages, whether direct, indirect, special or consequential arising from a failure of this product to operate in the manner desired by the user. WPI shall not be liable for any damage to data or property that may be caused directly or indirectly by use of this product.

Claims and Returns

Inspect all shipments upon receipt. Missing cartons or obvious damage to cartons should be noted on the delivery receipt before signing. Concealed loss or damage should be reported at once to the carrier and an inspection requested. All claims for shortage or damage must be made within ten (10) days after receipt of shipment. Claims for lost shipments must be made within thirty (30) days of receipt of invoice or other notification of shipment. Please save damaged or pilfered cartons until claim is settled. In some instances, photographic documentation may be required. Some items are time-sensitive; WPI assumes no extended warranty or any liability for use beyond the date specified on the container

Do not return any goods to us without obtaining prior approval and instructions from our Returns Department. Goods returned (unauthorized) by collect freight may be refused. Goods accepted for restocking will be exchanged or credited to your WPI account. Goods returned which were ordered by customers in error are subject to a 25% restocking charge. Equipment which was built as a special order cannot be returned.

Repairs

Contact our Customer Service Department for assistance in the repair of apparatus. Do not return goods until instructions have been received. Returned items must be securely packed to prevent further damage in transit. The Customer is responsible for paying shipping expenses, including adequate insurance on all items returned for repairs. Identification of the item(s) by model number, name, as well as complete description of the difficulties experienced should be written on the repair purchase order and on a tag attached to the item.

** Electrodes, batteries and other consumable parts are warranted for 30 days only from the date on which the customer receives these items.*



WORLD
PRECISION
INSTRUMENTS